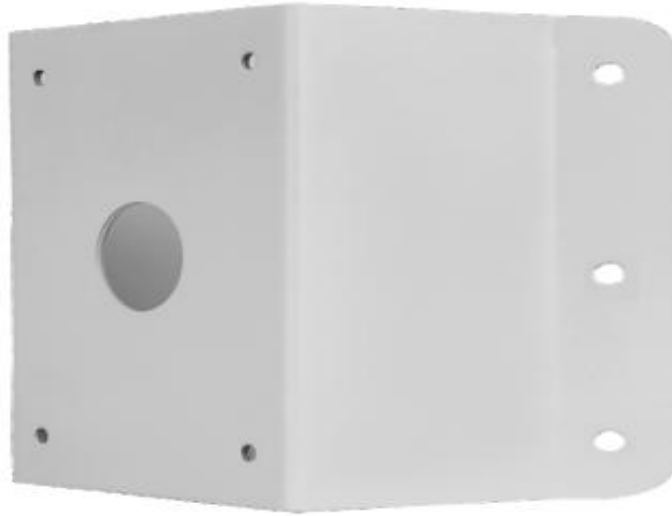


PTZ Dome Corner Mount



TR-UC08-B-IN

Specification	Description
Application	Indoor or outdoor, PTZ Dome Corner installation
Dimensions(L x W x H)	215mmx230mmx127mm(8.5" x 9.1"x 5")
Weight	0.73kg(1.6lb)
Material	Aluminum alloy

