

### How to Setup the Long Range PoE Capability of the uniview tec Camera

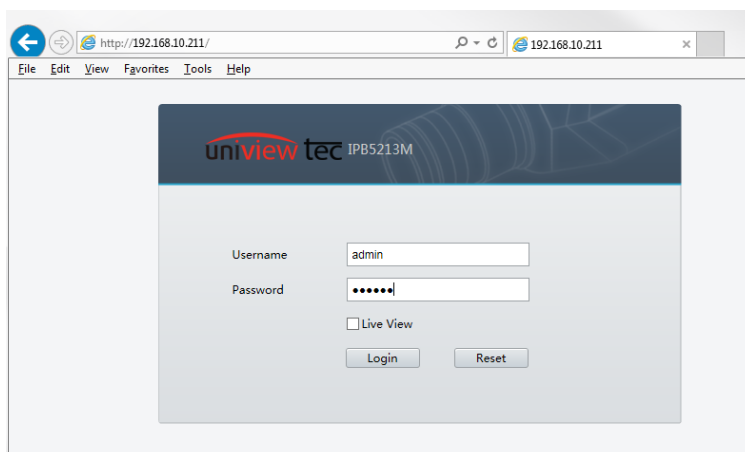
The following steps will guide you in setting up the Long Range PoE Capability of the uniview tec camera. This can extend cable lengths up to 820ft (250M) depending on the camera model. Please note that to take advantage of Long Range PoE capability the camera will need to be connected to either a uniview tec NVR or uniview tec Switch that supports Long Range PoE.

#### Camera Setup

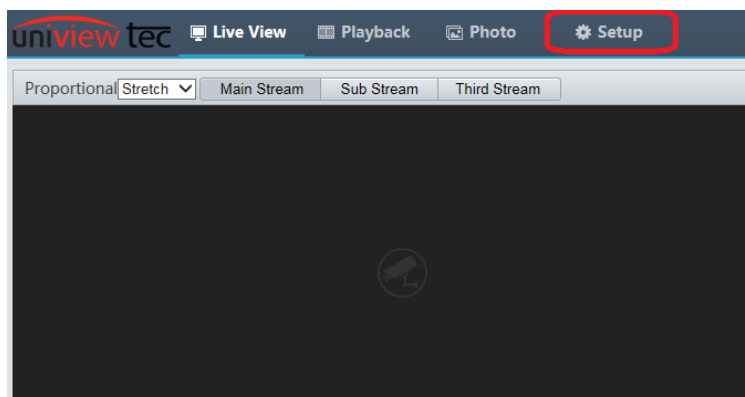
First, login to the setup of the IP camera.

This can be accomplished by browsing into the IP address of the camera.

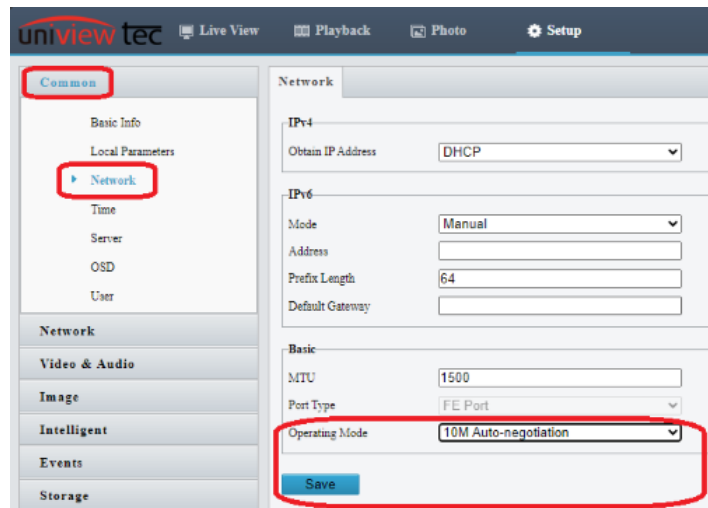
At the login screen enter the User/Password of the camera. The default credentials are admin / 123456



When the Live View screen comes up click on Setup.



Once in the Setup menu click on Network under Common. You will then want to change the operating mode to 10M Auto-negotiation and click Save.

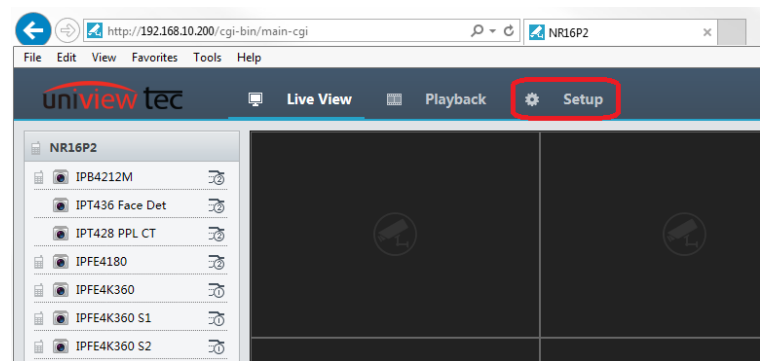


This change can also be accomplished by connecting the camera to the uniview tec Test Monitors ([4KTESTMON](#)).

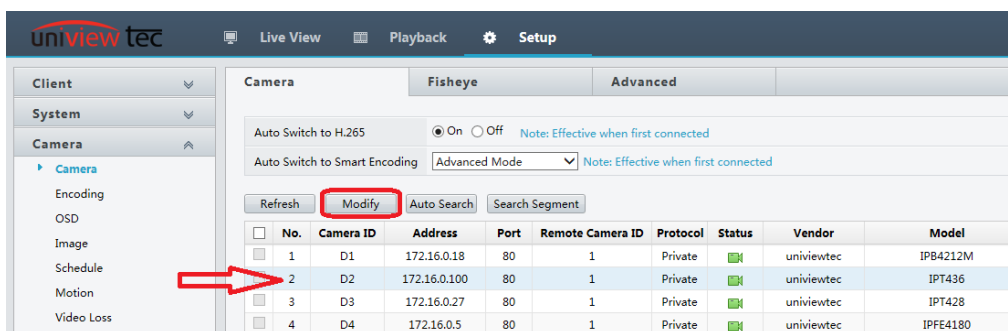
### NVR Connection Setup

If you are connecting the camera to one of the PoE ports on the NVR you will need to enable Extended Transmission in the NVR. To do this you will need to access the Setup page of the NVR by browsing to the local IP address of the NVR and logging in with the credentials for the NVR.

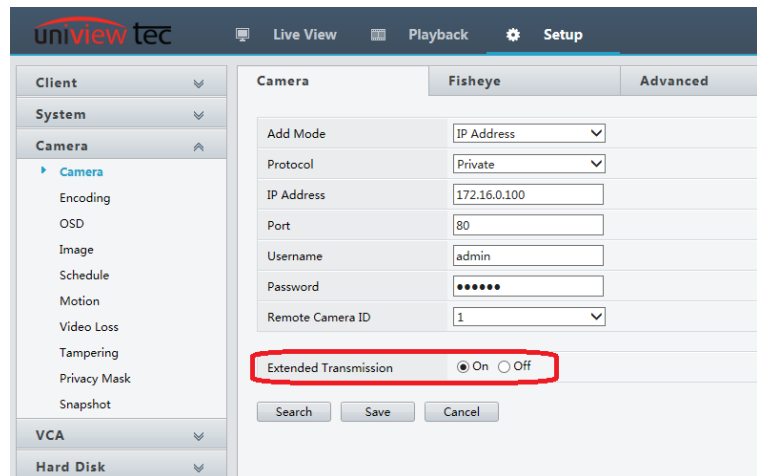
Once on the Live View screen click on Setup.



After accessing Setup, go to Camera. On the Camera page select the channel of the camera you want to enable Extended Transmission for, and then click on Modify.



After entering Modify, enable Extended Transmission.



## Network Switch

If the camera is connected to one of the uniview tec switches you will need to turn on the Extended Transmission switch on the front of the unit.

### Front panel



### Extend switching guide

You can toggle switch to decide whether to use Extend or not (Note: After toggling the switch, you need to reboot the device to enable or disable this function):

**ON:** Extend mode is enabled. All downlink ports are separated, and the network transmission distance is extended to 250 meters.

**OFF:** Extend mode is disabled (switch to standard switching mode). All ports can communicate with each other.