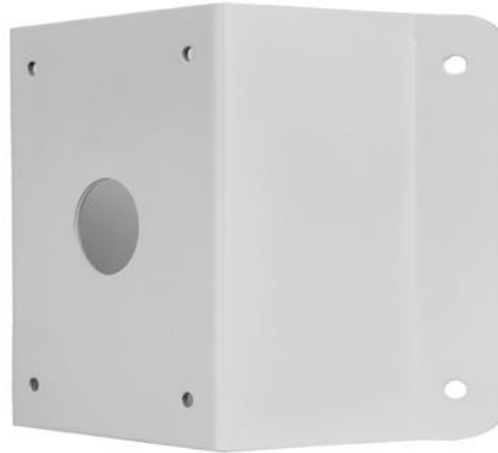


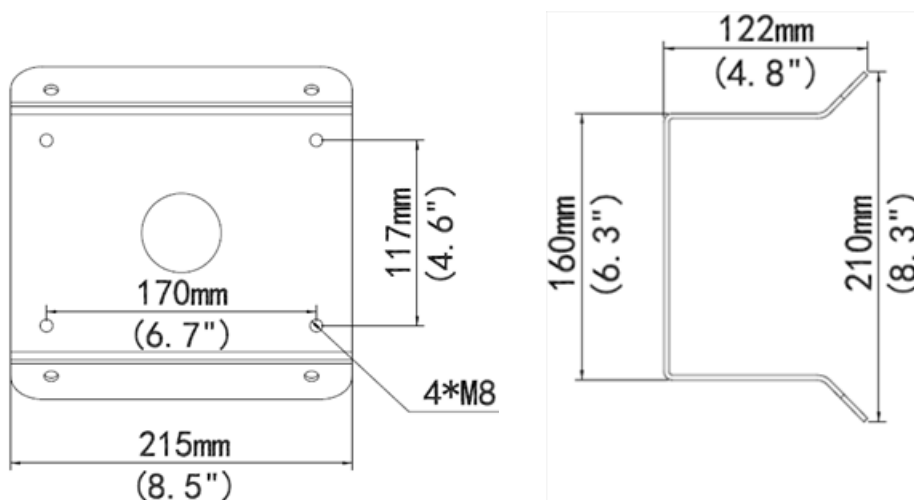
PTZ DOME CORNER MOUNT



TR-UC08-A-IN

Specification	Description
Application	Corner installation of PTZ dome camera
Dimensions (L×W×H)	215 x 210 x 122mm (8.5 x 8.3 x 4.8")
Weight	1.87kg (4.1lb)
Material	Aluminum Alloy

Dimensions



Note

1. Requires TR-WE45-A-IN Wall Mount